

---

## THIS IS A GUIDE ON REPAIRING YOUR BEYONWIZ IP-108 MODEL POWER SUPPLY UNIT

**WARNING – IF YOU HAVE ANY OTHER MODEL – DO NOT FOLLOW THIS GUIDE  
EMAIL ME FOR FURTHER ASSISTANCE (SEE REVISION HISTORY FOR CONTACT DETAILS)**

Last updated 25/10/2012 (Changes and updates listed in the revision history)

---

### **\*\* BRAND WARNING – DON'T USE SUNTAN CAPACITORS TO COMPLETE THIS REPAIR \*\***

...Or any other cheap brand for that matter. Please ensure that you follow this guide carefully, it tells you which brands to use and even lists part numbers further down.

Your local electronics enthusiast shops are not always a good place to source "good quality" electronic components. Try a more professional outlet such as Element 14 (Farnell) or RS Components or even XON Electronics. All can be ordered online and delivered to your door - it is worth the few extra days in delivery!

---

### **\*\* REPAIR THREAD - AMMENDMENT NOTE \*\***

The works contained in this guide are based purely on my own knowledge of repairing this model of power supply combined with 20 years' experience in the industry. As the age of these units increases, and therefore the amount of running time each machine has received increases, new components may be discovered as faulty. When this occurs I will update the guide to detail any new possible issues and resolutions that Beyonwiz owners may need to know about.

This repair guide is for the newer model Beyonwiz PSU's found many of the Beyonwiz units. It will require AT LEAST 2 HOURS of your time to complete it properly. The repair is not just about replacing capacitors, there is more to it than that and I urge you to read it carefully and follow ALL recommendations along the way to ensure that your PSU is working correctly at the end of the repair.

---

### **Why would you want to attempt to do this repair? (Besides the fact that you love your Beyonwiz)...**

Here is a list of reasons that \*may\* be getting you frustrated with your machine.

- \* HDD checks being performed regularly for no reason, i.e., each time you power the unit on
- \* Unstable operation, boot failure & system lockup
- \* Lost recordings & corrupt HDD (this can also be caused by the HDD cable which gets brittle from heat)
- \* HDD isn't detected by the BW but the HDD has tested ok in a PC or other PVR
- \* Colour distortion & abnormal looking output through HDMI or no HDMI output at all
- \* ERROR 0000 or E:BOOTING on system start-up (most common fault)
- \* No DISPLAY on the front of the machine but the HDD spins up immediately when mains power is supplied.
- \* Wired network failure & USB failure (very bad sign – stop using machine ASAP if this occurs)

NOTE – This is a broad list of the common failures for the Beyonwiz machines using this model PSU. Failures however are NOT limited to this list only and other issues may also be experienced. If this sounds familiar then it might be time for you to give your beloved Beyonwiz a makeover.

**THIS MODEL PSU IS FOUND IN MULTIPLE DIFFERENT BEYONWIZ MODELS. I HAVE NAMED THE REPAIR THREAD BY THE PSU MODEL NUMBER. (SEE BELOW PICTURE 1 IN SECTION 3 FOR A COMPLETE LIST OF MACHINES THAT USE THIS PSU)**

---

---

## TABLE OF CONTENTS

SECTION 1 - DISCLAIMER & GENERAL WARNING - READ BEFORE YOU BEGIN  
SECTION 2 - GENERAL ASSUMPTIONS, INFORMATION AND TOOLS REQUIRED FOR THE JOB  
SECTION 3 - AN OVERVIEW OF THE WORK REQUIRED  
SECTION 4 - MAKING A DISCHARGE TOOL IF YOU DON'T HAVE ONE  
SECTION 5 - REMOVAL OF THE PSU UNIT FROM YOUR BEYONWIZ  
SECTION 6 - REPAIRING YOUR PSU UNIT  
SECTION 7 - RE-ASSEMBLING YOUR BEYONWIZ  
SECTION 8 - TESTING AND FINAL NOTES  
SECTION 9 - REVISION HISTORY

---

### SECTION 1 - DISCLAIMER & GENERAL WARNING - READ BEFORE YOU BEGIN

I TAKE NO RESPONSIBILITY FOR WHAT YOU MAY DO TO YOUR OWN PSU OR PVR. THIS REPAIR IS PROVIDED FOR GUIDANCE ONLY AND IS INTENDED FOR EXPERIENCED USERS WITH ELECTRONICS KNOWLEDGE.

DO NOT ATTEMPT TO REPAIR A 240v PSU UNLESS YOU KNOW WHAT YOU ARE DOING!

IF YOU ARE ATTEMPTING SOMETHING LIKE THIS FOR THE FIRST TIME – THINK TWICE AND THEN THINK AGAIN!

THIS PSU WILL STILL CONTAIN VERY HIGH VOLTAGE EVEN WHEN DISCONNECTED.

THE HIGH VOLTAGE SIDE OF THE PSU RUNS AT AROUND 350v – MUCH HIGHER THAN 240v ONCE CONVERTED TO DC VOLTAGE – STAY AWARE AT ALL TIMES.

---

### SECTION 2 – GENERAL ASSUMPTIONS, INFORMATION AND TOOLS REQUIRED FOR THE JOB

To begin, I have made some basic assumptions, if you are contemplating this repair, then...

Firstly, I imagine you must own the basic equipment or can at least get it...

Secondly, you know something about electronics and are aware of what a capacitor or diode is...

Lastly, you are familiar with removing and installing electronic components...

If you fail on any of these points you should turn back now. Feel free to contact me and I can arrange to assist you with the repairs. (See revision history below for ways to contact me).

Equipment you will need for the repair...

A 25w Soldering Iron or Temperature Controlled Iron (Set to a temperature of no more than 400°)

Good Quality Solder & De-Soldering Braid or Solder Removal Tool

Discharge Tool (Instructions a little further down)

Wire Cutters & A Philips Screw Driver

Do not use a soldering iron that is TOO HOT as you can severely damage the PCB and/or other components. Equally, do not use anything less than 25w (i.e. 15w) as the negative tracks that you will be soldering are wide, and cover a considerable part of the PCB in the area you are working on. They will take a bit of heat to melt and replace the solder in a clean and appropriate way. Considerable frustration will occur if you use a soldering iron that is TOO LOW in temperature.

---

## SECTION 3 - AN OVERVIEW OF THE WORK REQUIRED

PICTURE 1 below displays the SIXTEEN [16] components that should be replaced for continued longevity of your PSU. I have shown a picture of the PSU with all affected parts removed and marked on the photo with 16 short RED lines so you can see visually where they all are. The values of the components listed on the right of the picture are my recommended values for replacement, PLEASE STICK TO THESE VALUES. I have provided part numbers and suppliers further down so you can order EXACTLY what you need.

**ALL COMPONENTS THAT NEED REPLACING HAVE BEEN REMOVED IN THIS PHOTO**

**HIGH VOLTAGE SIDE DANGER! CAN REACH 350v AND ABOVE.**

ALWAYS USE LOW IMPEDANCE CAPACITORS SUITABLE FOR SWITCH MODE POWER SUPPLIES

**\*\* RECOMMENDED BRANDS \*\***

USE PANASONIC FR SERIES CAPS OR

USE NICHICON HE SERIES CAPS

**16 RED MARKS ON PSU**

**16 COMPONENTS HAVE BEEN REMOVED**

**D4 - UF4003 DIODE (HV SIDE)**

**D7, D8, D9 - UF5404 DIODE**

**C36 - 1000pf POLY GREEN CAPACITOR (102J)**

**C40 - 0.33uf 100v CAPACITOR**

**C26, C27, C19 - 330uf 25v CAPACITOR**

**C30 - 470uf 35v CAPACITOR**

**C14, C16 - 3300uf 10v CAPACITOR**

**C15, C18, C20 - 1000uf 25v CAPACITOR**

**C17 - 2200uf 10v CAPACITOR**

**THE COMPONENT VALUES I HAVE LISTED ABOVE ARE THE VALUES THAT YOU NEED TO USE FOR REPLACEMENT.**

**THEY ARE NOT NECESSARILY THE VALUES OF THE COMPONENTS YOU WILL BE REMOVING**

**READ THE FULL REPAIR GUIDE FOR PART NUMBERS AND RETAIL OUTLETS THAT SELL THEM.**

**ALWAYS USE GOOD QUALITY COMPONENTS AND HIGH END LONG LIFE CAPACITORS AS DETAILED IN THE REPAIR GUIDE**

**PSU MODEL IP-108**

**PSU IS FOUND IN THE FOLLOWING MODEL MACHINES**

**DP-S1 (NEW BATCH 320gb MODEL ONLY)**

**DP-P1**

**DP-LITE & DP-LITEi**

**FV-L1**

**DP-H1**

(NOTE - DP-H1 USES A DIFFERENT SUB-REVISION WITH SOME COMPONENTS MISSING)

NEVER USE SUNTAN CAPACITORS

NEVER USE SUNTAN CAPACITORS

NEVER USE SUNTAN CAPACITORS

NEVER USE SUNTAN CAPACITORS

The capacitors above relate to and filter the many power rails of the power supply. Sometimes these capacitors are raised up and are swollen/split at the top or bottom, but this is NOT ALWAYS the case, and if yours are not swollen, it definitely DOES NOT mean that your capacitors are therefore ok. Replace them all regardless.

PLEASE ALSO NOTE – IMPORTANT – This repair is a ONE SIZE FITS ALL repair, and covers ALL components that I have encountered as faulty (bar one – rare). The components all relate to MANY different faults and one day when I get time I will list which parts cause which symptom. In the meantime, replace them all with my suggested values and brands below and you won't have any further issues for a very long time to come.

Additional to the replacement of these components, you will need to re-solder many of your PCB solder joints as they will by now have started to crack and become “dry” so to speak. You will need to inspect the PCB and look for poor solder joints with obvious cracking on them. There is ALWAYS at least 20 – 30 of them when I do a repair. If you can't find any then you are not looking hard enough. I will go into more on this later on.

---

## SECTION 4 – MAKING A DISCHARGE TOOL IF YOU DON'T HAVE ONE

Even when the unit is disconnected from mains power, the risk of shock or shorting from the PSU unit is high. The mains capacitor can hold considerable voltage. You should as a matter of precaution discharge the mains circuit **BEFORE** you repair the PSU. Do this using a suitable discharging tool or make your own as detailed here.

Making a Capacitor Discharge Tool - You can make a capacitor discharge tool fairly easily. You will need...

2 x **INSULATED** alligator clips  
40cm of 14awg stranded wire  
10k ohm, wire-wound, 10 WATT RESISTOR

Solder an alligator clip to both ends of the 40cm wire. Then cut the wire about 18cm along from one end, and layers of **ELECTRICAL TAPE**. Alternatively, you can use heat shrink tube, at least 2 layers of it, one over the other. **PICTURE 2** below is what it should look like when finished, or similar anyway!



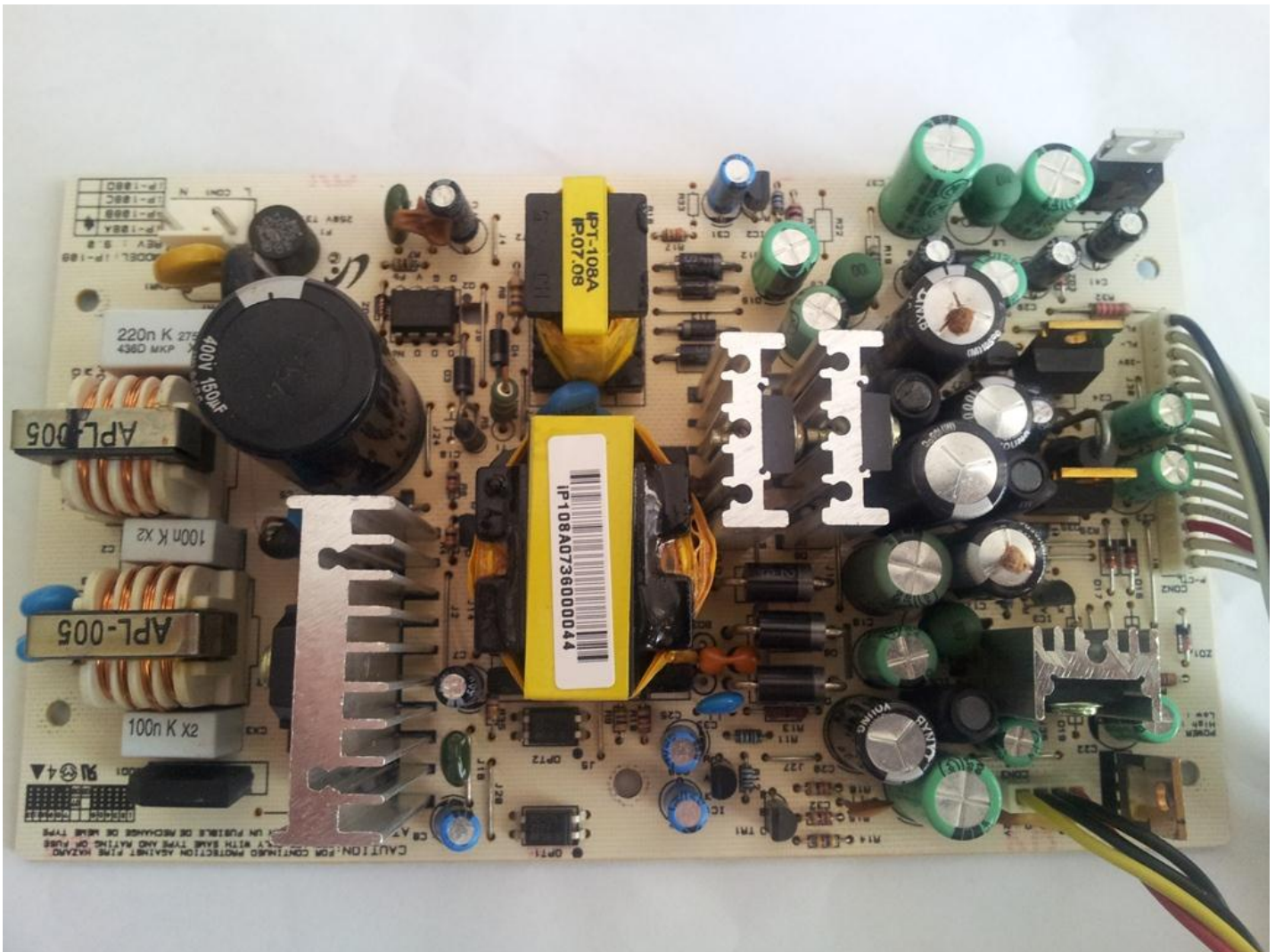
**(DO NOT TRY TO DISCHARGE YET - SEE BELOW IN THE “REPAIRING YOUR PSU UNIT” SECTION FOR WHEN TO DO THIS)**

---

---

## SECTION 5 – REMOVAL OF THE PSU UNIT FROM YOUR BEYONWIZ

1. REMOVE POWER FROM THE BEYONWIZ MACHINE, ensure that the power cable is unplugged, not just turned off. This sounds like the most obvious point doesn't it, but surprisingly it isn't!!! Wait at least 1 hour after removing power before continuing with the repair, to allow the unit to fully cool down.
  2. Unscrew and remove the TWO (2) side case screws and FOUR (4) rear case screws from your unit and remove the lid by sliding it back and then lift it upwards.
  3. Disconnect the mains voltage power connector from the PSU. To remove this you will need to push the connector lock in as you pull it up and off the board. (Top left connector in PICTURE 1). Refer to POINT 1 above before doing this!
  4. Disconnect the BW mainboard power cable FROM THE MAINBOARD – this cable is NOT removable from the PSU. To remove it off the mainboard, push the connector lock in as you pull it up and off.
  5. Disconnect the HDD power cable FROM THE HDD (and DVD drive if one exists) – this cable is NOT removable from the PSU. It simply pulls out of the back of the HDD, but gently or you can crack the HDD casing/connector.
  6. Unscrew and remove the FIVE (5) screws holding the PSU in place and lift the PSU up and out of the BW case by its edges being sure to avoid touching any components, it will still contain stored voltage at this time.
- You should now be staring at your power supply. It “should” look something like PICTURE 3 below.



## SECTION 6 – REPAIRING YOUR PSU UNIT

If you carefully turn your PSU over and look at the solder side of the PCB, you can familiarise yourself with where the points are that you will need to unsolder which I have marked for you. Refer to PICTURE 4 below.

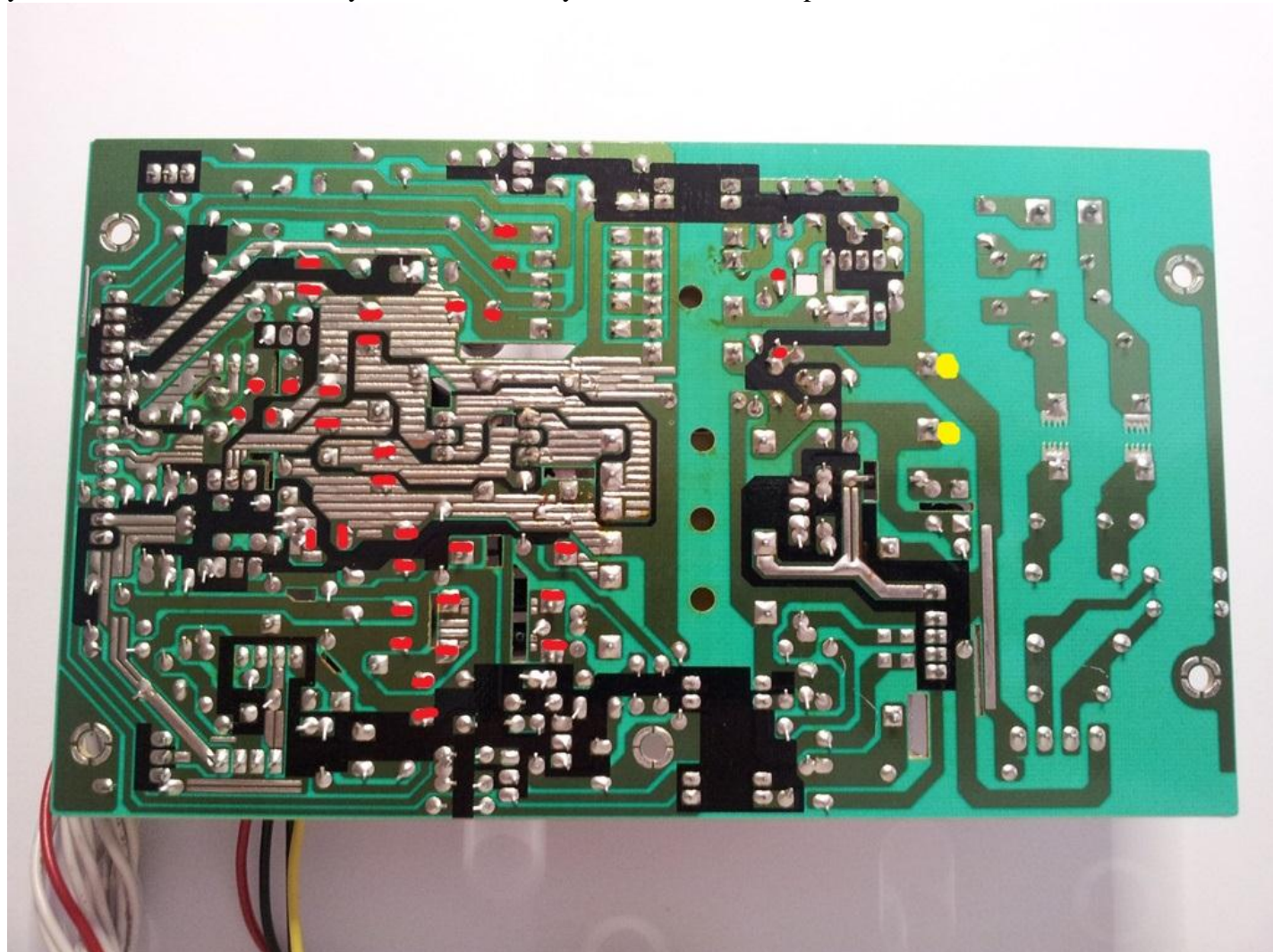
At this point you should DISCHARGE any stored voltage from the mains capacitor. As mentioned already, the stored voltage here can cause you big problems, least of all would be shorting/sparking the unit, and worst would be hurting yourself considerably. See SECTION 3 above for more information on making a discharging tool if you do not have one.

Discharging the mains capacitor – The capacitor that will need discharging is the BIG 400v mains capacitor on the HIGH VOLTAGE side of the PCB. If you have followed the instructions this far, then your unit will be off, disassembled and you should be staring at the solder side of your power supply PCB. If not, go back up and follow the previous instructions.

Carefully connect the alligator clips to the capacitor terminals/solder points on the PCB (one clip to each exposed terminal, don't short them!). Look at PICTURE 4 below for the location of the BIG 400v capacitor solder points, I have marked them in YELLOW. Once attached, the resistor will drop the voltage down in around a minute or so, count to 90 slowly and then unclip and you're done. Test using a multimeter if you have one to ensure that the voltage is nil.

Now it's time to replace the components on the board. You will need to replace 16 components in total. The voltage and type of each component is detailed in PICTURE 1 above and with more detail below where I have provided MANUFACTURER PART NUMBERS for ordering replacements.

In PICTURE 4, you can see the underside of the PSU board, and as mentioned above I have marked the points you will need to unsolder, they are in RED – they will match the components marked on PICTURE 1 above.



Below are the PCB PART NUMBERS to replace and also a RECOMMENDED REPLACEMENT for each.  
(All replacements listed below have been specifically selected for their quality, SIZE and suitability)

C36 - 1000pf / 1nf Poly Green Capacitor (Mono) 102J  
REPLACEMENT USE SAME 102J (1000pf / 1nf) POLY CAPACITOR  
RECOMMEND PURCHASE FROM WES / WAGNER – THEIR PART NUMBER IS - NL.001

C40 - 0.33uf 50V ELECTROLYTIC CAPACITOR  
REPLACEMENT USE TKR (JAMICON) 0.33uf 100V CAPACITOR  
RECOMMEND PURCHASE FROM WES / WAGNER – THEIR PART NUMBER IS - .33TKR100 (. BEFORE 33)

**PURCHASE EVERYTHING BELOW THIS LINE FROM ELEMENT 14 OR RS COMPONENTS  
(DO NOT SUBSTITUE THESE – THEY ARE LISTED FOR A REASON – BEST PARTS TO USE FOR THE JOB)**

D4 - SF14 DIODE 200V ULTRA-FAST  
REPLACEMENT USE “VISHAY UF4003 DIODE” -  
\*\* THIS IS NOT THE SAME AS A 1N4003 POWER DIODE SO DO NOT SUBSTITUTE

D7, D8, D9 - UF5402 DIODE 200V ULTRA-FAST  
REPLACEMENT USE “VISHAY UF5404 DIODE”  
\*\* THIS IS NOT THE SAME AS A 1N5404 POWER DIODE SO DO NOT SUBSTITUTE

C19, C26, C27 - 330uf 25v  
REPLACEMENT PANASONIC FR SERIES P/N: EEUFR1E331 - 330uf 25v

C15 - 1000uf 10v  
REPLACEMENT PANASONIC FR SERIES P/N: EEUFR1E102L - 1000uf 25v

C18, C20 - 1000uf 25v  
REPLACEMENT PANASONIC FR SERIES P/N: EEUFR1E102L - 1000uf 25v

C14, C16 - 3300uf 10v  
REPLACEMENT PANASONIC FM SERIES P/N: EEUFM1A332 - 3300uf 10v

C30 - 470uf 16v  
REPLACEMENT PANASONIC FR SERIES P/N: EEUFR1V471L - 470uf 35v

C17 - 2200uf 10v  
REPLACEMENT PANASONIC FR SERIES P/N: EEUFR1A222L - 2200uf 10v

Unsolder and remove the old components one at a time and then use solder braid to clean off any solder left on the PCB solder pad. This will then leave you a nice clean, unblocked hole (2 of them for each component) for which you can then drop in your new component and line it up before soldering it in permanently. Ensure that each component is installed around the right way, as EVERY COMPONENT you are working with (except for the POLY CAP) is polarised so DO NOT INSTALL THEM AROUND THE WRONG WAY (more notes on this 2 paragraphs down). Once you have soldered each into place, remove the excess wire/leg of the components using wire cutters, they should be cut flush with the solder pad, as per all other joints on the PCB. Please note how the 3 diodes D7, D8, D9 are sitting about 1cm above the PCB, and ensure that you install the 3 replacements in the same way.

Now assuming everything went well in replacing the 16 components, now what? Clean the flux off your board with Turps or flux/PCB cleaner so that you can see the board clearly. Then get a nice white bright lamp or torch and inspect your PCB. There will almost certainly be a LOT of dry joints on your PSU, especially around the middle of the low voltage side, and in the high voltage area too. They should be easy to identify. Spend the time and MAKE SURE you go over them properly, ensuring you don't short any of the joints out with other joints on the board. It can sometimes be really hard to resolder the joints properly as there is a protective lacquer coating over the board which makes it pretty hard for the solder to stick. Scraping the affected legs with a blade BEFORE soldering them helps to make the solder stick better if need be.

So let's check where we are at now and make sure the workmanship is up to scratch... Double Check and triple check that you have installed the 16 components around the correct way, as mentioned they are all polarised (except for the POLY CAP) and must be installed correctly. The – (or negative) of the capacitors is marked on the side of the capacitor as well as on the PCB board. The Anode and Cathode of the diodes is also marked with a band/line on the diode and on the PCB as well so MAKE SURE EVERYTHING IS AROUND THE RIGHT WAY. Double check the rest of your work (especially dry joints) as a safe guard before proceeding. Everything ok?

So the caps are installed correctly... the diodes are around the right way... all the obvious dry joints have been resoldered nicely... NO SHORTING (double check that too)... Basically you're itching to get it back into the machine right??? Ok, go for it, that's pretty much the repair done!

Perhaps just one final check...All good? (Yes I'm Paranoid...)

Ok, time to reinstall so keep reading.

---

## SECTION 7 – REASSEMBLING YOUR BEYONWIZ

To RE-ASSEMBLE your PSU unit into your Beyonwiz...

1. Place the PSU back into its proper home, make sure the cables are not caught underneath, line it up so that the FIVE (5) screw holes are aligned to the case mounts, then replace the screws you took out and secure the PSU.
2. Connect the Hard drive power cable back into the HDD (and DVD drive if one exists).
3. Reconnect the BW mainboard power cable to the mainboard. Line it up and push down, it should click into place and will not fit on properly the wrong way around.
5. Check to make sure the IDE cable (or SATA cable for newer models) is still pushed in tight in both the hard drive (and DVD drive if one exists) & mainboard, sometimes it can work loose.
6. Reconnect the mains power cable to the PSU. Line it up and push down, it should click into place.

That's it. You're basically ready to go. Do not replace the lid just yet, do some testing first.

---

## SECTION 8 – TESTING AND FINAL NOTES

Before replacing the lid and installing your unit back into its permanent home, test it for power and function. A basic test would be to turn it on and check for standby power. At this point power the wiz up and check that the unit goes from standby to "on", and then check that the HDD powers up, and that you have output to a TV/monitor. If that's all good, then you can do further functionality tests whenever you are ready. Depending on how bad your PSU was, you may well need to format your Hard Drive, this is quite normal, and at the very least you may need to do a HDD Check, this does not mean your PSU is still faulty.

There is also every possibility you will need to REPLACE the IDE cable (for the older machines) as well and there is no time like now to do it being that the wiz is open. They tend to get very brittle. A standard 80 wire ATA 133 cable is fine. NB: you will need to bore out the blank on the mainboard connector of your new cable.

Ok, Now that you have... completed your testing, are happy with the result and all features are working well - you can relax, put the lid back on and replace the 6 case screws, job done! The cost apparently of replacing this PSU with a new one from Beyonwiz was upwards of \$150+ excluding delivery or labour to fit it (not sure of the current price if they are even available that is). This repair should cost you no more than \$25 - \$30 in components plus maybe a bit for delivery if you order them online and of course the cost of your time too!



To anyone that would like me to do it for them, I can do... for a very low and reasonable amount, which varies on how bad your PSU is, as it takes a LONG TIME to repair these units properly. (See revision history below for ways to contact me). I do not repair these for the money / profit as anyone who has used me would know.

I hope this assists many users with extending the life of their units!

---

## SECTION 9 – REVISION HISTORY

Version Changes & Updates...

1.0 - (25/10/2012)

Initial write up - 4 pictures included

Made into a downloadable PDF version - Download it from the link below.

For repair assistance with this or other BEYONWIZ models - please visit my web site -

[www.decisivecomputersolutions.com.au/service.html](http://www.decisivecomputersolutions.com.au/service.html) or contact me through the messaging system of this forum.

Found an error or omission? Please let me know. I am far from perfect, so if you see something, please tell me through a PM on the forum or via email so it can be fixed. Thanks.

---